



**HARVEST 2022  
VINEYARD GUIDE**



# GREETINGS FROM NAPA

---

Welcome to our 2022 Vineyard Guide.

With bud break, vines awaken from their winter slumber. We celebrate our eleventh year and the beginning of the 2022 growing season with the release of our Vineyard Guide. Every year, we collaborate with the state's best growers and most coveted sites. Our 2022 guide represents the cream of the crop. We selected only properties with talented viticulturists who have a passion for quality and who work hand-in-hand with our winemaking team to get the best out of every vine. The partnerships result in world-worthy wines, which routinely earn scores in the mid-90s.

We continually search for superb fruit from preeminent growers, and our offerings for 2022 include stunning new vineyard properties as well as two new varieties. Continuing after a sensational trial run with us in 2021, our 2022 lineup includes Nance's Vineyard in Alexander Valley with its flavor-packed Sauvignon Blanc and Zinfandel. Brand new to our offerings, Wildwood Vineyards is a historic Sonoma property planted in the 1800's, then owned and farmed by five generations of the Kunde family. This gorgeous property draws top-flight wine brands, and we were fortunate to acquire a legacy contract for Sauvignon Blanc. Right up the road from Wildwood sits the lovely little Van Lobo Sel Vineyard, growing dry-farmed Sangiovese. Offered for the first time to an outside winery, we enthusiastically accepted. Finally, we are delighted to re-introduce the fabulous Alder Springs Vineyard in Mendocino. Our long-time clients will recognize this lauded grower, and we are excited to source two white varieties holding rock star status: Semillon and Picpoul Blanc. These new varieties from an exceptional grower add a wonderful dimension to our offerings.

## OUR UNIQUE CUSTOM WINEMAKING PROGRAM

Wine writers hint that we operate an incubator for luxury brands. While we work behind the curtain for several cult labels that wine geeks covet, our core mission centers on crafting custom high-end wine for individuals, groups, companies, and non-profit organizations.

Our clients share a universal enthusiasm that transforms wine consumption into wine collection, and finally, for the lucky and adventurous few, wine creation. Clients capture the rarely attained dream of creating their own wine and sharing it with family and friends, the true joy of professional winemakers. The Wine Foundry opens the door to this uncommon opportunity with a turn-key, state-of-the-art program.

Many wish to start at the very beginning, selecting from our extensive vineyard and varietal options for the upcoming vintage. For those with differing goals and timelines, we offer flexible entry at any point in the production process. Some clients prefer to select wine already in barrel from a prior vintage, an offering we affectionately call an "adoption barrel." Clients on a short timeline may want a custom-designed label on ultra-premium wines we have already bottled without a label, known as "shiners." Regardless of your entry point, level of involvement, or your wine knowledge, you will acquire a world-worthy bottling that stacks up against the very best.

Take your time and enjoy exploring this Vineyard Guide. Each page spotlights commercial wines produced from the featured vineyard to provide examples and insight into possible interpretations of the fruit from these acclaimed fields. If you have questions concerning differences among the vineyards or if you would like to learn more about the process, contact Stuart Ake at [makewine@thewinefoundry.com](mailto:makewine@thewinefoundry.com) or 707.637.8821 x7302.

## PRICING

Per barrel pricing (24 cases or 288 750 mL bottles) is listed on each specific vineyard page. The price includes everything you need: fruit, materials, winemaking, blending wine, oak (new, neutral or a blend; top French coopers), labeling, packaging and bottling; with optional upgrades available. For payment terms and volume discounts, refer to the last page of this Guide.

We look forward to working with our returning friends and we welcome new wine enthusiasts to our community.

Cheers,  
Philip Von Burg



# CUSTOM WINEMAKING

---

We follow classical winemaking methods that span 4 to 24 months. You may enter at any step of the process. Some start at the very beginning with the upcoming vintage; others prefer to “adopt” wine already in barrel; or you may focus on designing a label for finished wines already in bottle.

## CHOOSE A VINEYARD

Browse through each of the vineyards in our Guide. Each property has unique character traits, so when possible, try commercial wines made from vineyards that interest you. If you prefer, talk to us about the style of wine you enjoy and we’ll help choose the property best suited to your goals.

## CREATE A PLAN

Every wine begins with a series of decisions that shape the aromas, flavors and structures in your bottle. You will consult directly with our winemaking team about the style of wine you prefer, and we will create a plan to achieve your goals. We will guide you through every step of the process, from vineyard and varietal selection down to the details of corks and capsules.

## FOLLOW THE VINEYARD

Throughout the growing season, we’ll share weather updates, vineyard photographs, and interviews with growers to offer insights on the vintage and to follow development of the fruit on vine. As harvest nears, we’ll begin sharing our estimates for the window of time when your grapes will likely be ready for harvest. Due to Mother Nature’s notorious tendency to play with weather, we cannot predict the exact date we’ll harvest, but we monitor each property closely to ensure optimum flavor development on the day we make the pick.

## VISIT THE WINERY

After the grapes are harvested, you are welcome to join us at the winery for sorting, crushing, fermenting and pressing your wine. If you can’t be here in person, our winemaking staff will always handle every step of the process, as guided by your wine plan.

## DESIGN YOUR PACKAGING

Once you sign up to make wine, you’ll receive a Packaging Guide that explains the design process and your packaging choices. The Packaging Guide will help you and our design team work together to select your bottle, cork and capsule, and create a unique label specifically for your wine. Clients making wine with us for the first time will receive 5 hours with our designers to develop your custom label.

## BLEND YOUR WINE

We specially craft additional wine each year for the purpose of bringing added depth and complexity to your final blend. As we near bottling, you will have an opportunity to work with a winemaker to fine-tune the aromatics, texture and balance of your wine through a blending session. Most clients consider this a highlight of the experience, playing with slight variations to dial in the finishing touches and complete a truly unique signature wine.

For more information, on the process and details on all of our vineyards, please contact our team by emailing [makewine@thewinefoundry.com](mailto:makewine@thewinefoundry.com) or call 707.637.8821 x7302.





# TABLE OF CONTENTS

<b>CABERNET FRANC</b>	Stagecoach Vineyard®, Napa Valley	5
<b>CABERNET SAUVIGNON</b>	A2 Vineyard, Rutherford, Napa Valley	6
	Broken Rock Vineyard, Napa Valley	7
	Foxtrot Vineyard, Oakville, Napa Valley	8
	Greeg Mountain Ranch, Napa Valley	9
	Moulds Family Vineyard, Oak Knoll District of Napa Valley, Napa Valley	10
	Slingshot Vineyard, Howell Mountain, Napa Valley	11
	Stagecoach Vineyard®, Napa Valley	12
	Trubody Lane Vineyard, Oak Knoll District of Napa Valley, Napa Valley	13
<b>CHARDONNAY</b>	Rodgers Creek Vineyard, Petaluma Gap, Sonoma County	14
<b>GEWÜRZTRAMINER</b>	Helluva Vineyard, Anderson Valley, Mendocino County	15
<b>GRENACHE</b>	Notre Vue Vineyard, Russian River Valley, Sonoma County	16
<b>MERLOT</b>	Broken Rock Vineyard, Napa Valley	17
<b>PETIT VERDOT</b>	Stagecoach Vineyard®, Napa Valley	18
<b>PICPOUL BLANC</b>	Alder Springs Vineyard, Mendocino County	19
<b>PINOT GRIS</b>	Rivercat Vineyard, Clarksburg	20
<b>PINOT NOIR</b>	Lindsay’s Vineyard, Sta. Rita Hills, Santa Barbara County	21
	Rodgers Creek Vineyard, Petaluma Gap, Sonoma County	22
<b>SANGIOVESE</b>	Van Lobo Sel Vineyard, Kenwood, Sonoma County	23
<b>SAUVIGNON BLANC</b>	Nance’s Vineyard, Alexander Valley, Sonoma County	24
	Wildwood Vineyards, Sonoma Valley, Sonoma County	25
<b>SÉMILLON</b>	Alder Springs Vineyard, Mendocino County	26
<b>SYRAH</b>	Hyde Vineyard, Los Carneros, Napa Valley	27
<b>VIOGNIER</b>	Catie’s Corner Vineyard, Russian River Valley, Sonoma County	28
<b>ZINFANDEL</b>	Monte Rosso Vineyard, Moon Mountain, Sonoma County	29
	Nance’s Vineyard, Alexander Valley, Sonoma County	30
<b>THE PROJECTS</b>	The Proprietary White Project	31
	The Proprietary Red Project	
	The Rosé Project	
	The Napa Project	32
	The Rhône Project	
	The Super Tuscan Project	
	The Sparkling Project	
	The Custom Label Project	
<b>DESIGN</b>	Design Your Packaging	33
<b>PAYMENT</b>	Options & Discount Structure	34





**BARREL PRICE**

\$13,100.00 (\$45.49/BOTTLE)

VINEYARD DESIGNATION \$500 SUBJECT TO APPROVAL FROM GROWER

**COMMERCIAL EXAMPLE**

Krupp Brothers \$150 | CELLAR TRACKER 100  
Paul Hobbs \$175 | WINE ENTHUSIAST 97  
Foundry \$110 | ANTHONY DIAS BLUE 95

**AVA**

Napa Valley

**GROWER**

Trini Amador

**SOIL**

Hambright & Guenoc series

**CLONE / ROOTSTOCK**

Clone 332 on 110R & 5BB Rootstock

**TRELLIS / TRAINING**

Bi-Lateral Cordon, VSP (Vertical Shoot Positioning)

## STAGECOACH VINEYARD®

With a bandit, a water witch and the removal of 1 billion tons of rock, the story of Stagecoach Vineyard® sounds borrowed from mythology. No less dramatic than the herculean efforts to cultivate terrain once considered unplantable, the astonishing quality of fruit from this awe-inspiring property completes the legend. Stagecoach Vineyard® sits between 900 and 1700 feet up the southern face of Pritchard Hill onto Atlas Peak. The site is planted to a wide range of varietals and rootstocks and features several distinct microclimates.

Our Cabernet Franc is from the most sought-after section – Block E1. This stretch of low yielding vines delivers generous aromatics of red fruit and soft berry, which gradually give way to refined minerality and light herbaceous notes.





**BARREL PRICE**

\$14,300.00 (\$49.65/BOTTLE)

VINEYARD DESIGNATION \$500 SUBJECT TO APPROVAL FROM GROWER

**COMMERCIAL EXAMPLE**

Alpha Omega Winery \$194  
B Cellars \$240  
Schrader Cellars \$419

**AVA**

Rutherford, Napa Valley

**VINEYARD MANAGER**

Mauricio Soto

**SOIL**

Gravelly Loam, Perkins & Boomer

**CLONE / ROOTSTOCK**

Clone 337 on 101-14 Rootstock & Clone 47.1 on 039-16 Rootstock

**TRELLIS / TRAINING**

Bi-Lateral Cordon, VSP (Vertical Shoot Positioning)

## A2 VINEYARD

One of the most historic and sought after properties in the world – A2, as we denote it, was originally owned and planted by Thomas Rutherford in 1895. Georges de Latour, founder of Beaulieu, purchased the site in 1928 and it became the home to BV’s Rutherford Cabernets made by elite winemaker, Andre Tchelistcheff, throughout the ‘60’s and ‘70’s. The site was then purchased by Beckstoffer Vineyards in 1988. Mauricio and team have replanted using modern clones, trellising and spacing to yield optimum quality. Wines from this field consistently score in the high 90s.

Opulent, rich and full-bodied with black currant, cedar, cassis, black-licorice and cherry complimented by earthy flavors associated with Rutherford Dust.





### BARREL PRICE

\$12,900.00 (\$44.79/BOTTLE)

### COMMERCIAL EXAMPLE

Oestermann Family Wines \$90  
Oleandri Wines \$90  
Prothro Family Wines \$75  
Foundry \$115 | ANTHONY DIAS BLUE 95

### AVA

Napa Valley

### GROWER / OWNER

Bill Hill

### SOIL

Volcanic & Granite-like sub soil

### CLONE / ROOTSTOCK

Clone 337 on Riperia  
Gloire Rootstock

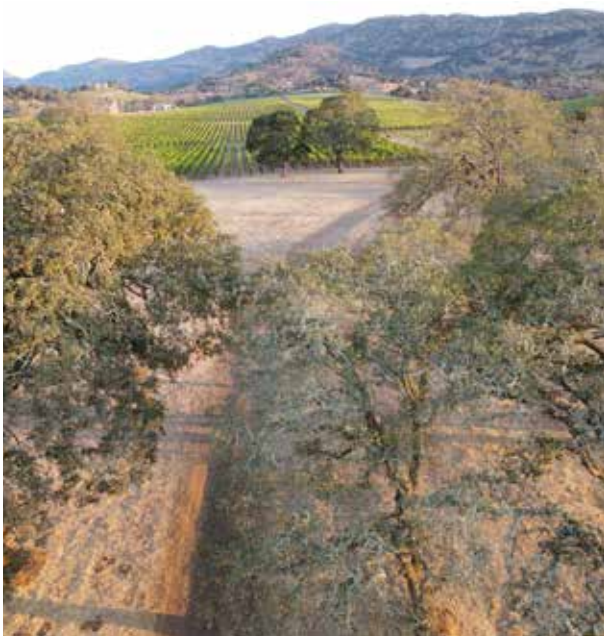
### TRELLIS / TRAINING

Bi-Lateral Cordon, VSP (Vertical Shoot Positioning)

## BROKEN ROCK VINEYARD

Napa legend, Bill Hill, pioneered modern viticulture in Napa Valley by introducing high density plantings and developing rootstock and grape clone combinations that became textbook practices throughout the region. Not one to rest on laurels, his vineyard revolution remains in full swing at Broken Rock Vineyard, where Bill runs continuous trials in search of grape perfection. Wines from Bill Hill’s properties, including Broken Rock, consistently appear in the WS annual Top 100.

The storied Broken Rock Vineyard lies just off Silverado Trail at the foot of Atlas Peak. Western exposure on the slope offers plenty of ripening afternoon sun, thus delivering the best of both worlds - brawny hillside muscle balanced by rich valley floor flavors of black of red fruit across the nose and palate. The Wine Foundry began sourcing from Broken Rock starting with our first vintage, and we proudly offer this client favorite year after year.





# CABERNET SAUVIGNON

### BARREL PRICE

\$12,600.00 (\$43.75/BOTTLE)

### COMMERCIAL EXAMPLE

Frank Fredericks Estate \$300  
Bankfield Wines \$225

### AVA

Oakville, Napa Valley

### GROWER / OWNER

Mark Whiting

### SOIL

Sandy Loam & Gravelly  
Alluvium

### CLONE / ROOTSTOCK

Clone 4 on 3309 Rootstock

### TRELLIS / TRAINING

Bi-Lateral Cordon, VSP (Vertical Shoot Positioning)

## FOXTROT VINEYARD

The Wine Foundry proudly holds exclusive access to fruit from Mark Whiting’s sustainably farmed gem, nestled off the Oakville Crossroad behind Swanson and Groth.

The Oakville AVA’s mid-valley location enjoys brisk air flow delivered by morning fog, which peels off to reveal ripening afternoon sun. This cycle yields highly concentrated and hedonistic interpretations of the grape.

Bold, dramatic and oozing with confidence, Foxtrot Vineyard delivers quintessential Oakville Cabernet Sauvignon with a robust palate assembled around a hearty core of cherry, black fruit and spice.







# CABERNET SAUVIGNON

**BARREL PRICE**

\$13,500.00 (\$46.88/BOTTLE)

**COMMERCIAL EXAMPLE**

Melka \$125  
Foundry \$115  
Bankfield Wines \$225

**AVA**

Napa Valley

**GROWER / OWNER**

John Hinshaw

**SOIL**

Hambright & Guenoc series

**CLONE / ROOTSTOCK**

Clone 8 on 1103P Rootstock

**TRELLIS / TRAINING**

Bi-Lateral Cordon, VSP (Vertical Shoot Positioning)

## GREGG MOUNTAIN RANCH

Looking over Lake Hennessey and Pritchard Hill, Gregg Mtn Ranch is perched at 1200 feet elevation on the impossibly steep slopes of Hennessey Ridge. The terrain is wild, rugged and breathtaking. Visits from mountain lion, boar and bear are common. Here one must literally climb vertically to appreciate the challenges of farming this site. Full production of this Clone 8 on 1103P only yields 2 tons per acre, if you're lucky, in the best years.

Dense fruit, extreme structure and strong tannins make for a bold interpretation.





**BARREL PRICE**

\$14,300.00 (\$49.65/BOTTLE)

**COMMERCIAL EXAMPLE**

Dakota Shy \$255  
Roy Piper Wines \$180

**AVA**

Oak Knoll District of  
Napa Valley, Napa Valley

**GROWER / OWNER**

Betsy Moulds  
Vineyard Manager: Roberto Juarez

**SOIL**

Fagen Loam with  
Volcanic Elements

**CLONE / ROOTSTOCK**

Clone 169 on 1616c Rootstock

**TRELLIS / TRAINING**

Bi-Lateral Cordon, VSP (Vertical Shoot Positioning)



## MOULDS FAMILY VINEYARD

Something special has come to fruition on the western benchlands of the Oak Knoll District. Just over twenty years ago, Betsy and Steve Moulds planted 11 acres of Cabernet Sauvignon on the gently sloping hillsides at the foot of Mt. Veeder. Accolades quickly followed, culminating with the *Napa Valley Grape Growers of the Year* in 2018. Precision viticulture and sustainable farming guide their meticulous vineyard management. Each cane on every vine will have a specific number of leaves to maximize airflow and photosynthesis. The family’s commitment to quality extends beyond the vineyard in leading a number of philanthropic and education efforts including the Napa Valley’s Farmworker Foundation, which has raised millions of dollars in support of professional development opportunities for 21,000 vineyard workers.

Wines from MFV display a gorgeous nose and palate built upon floral and berry notes driven by a combination of fresh violets, expressive blackberry and graphite.





<b>BARREL PRICE</b> \$13,900.00 (\$48.26/BOTTLE)	<b>AVA</b> Howell Mountain, Napa Valley	<b>GROWER / OWNER</b> Confidential
	<b>SOIL</b> Volcanic Ash & Red Clay	<b>CLONE / ROOTSTOCK</b> Clone 7 on 3309 Rootstock
<b>TRELLIS / TRAINING</b> Bi-Lateral Cordon, VSP (Vertical Shoot Positioning)		

## SLINGSHOT VINEYARD

Secrecy reigns supreme among these vines, planted nearly 2000 feet above the valley floor on Howell Mountain. Although not at liberty to reveal the grower or owner's vineyard name, the wines are legendary among clients at The Wine Foundry, reputed as the biggest, boldest and most ostentatious in the cellar. Decomposed volcanic ash-based soil combined with treacherously steep slopes stress vines into producing tiny berries with structured spicy notes and robust tannins.

Slingshot Vineyard produces a glorious juggernaut of mountain fruit and structure. With a muscular core of blackberry and dark chocolate, backed by brooding structure and focused acidity, wines from this vineyard become the most age-worthy bottles in the cellar.





**BARREL PRICE**

\$13,200.00 (\$45.83/BOTTLE)

**VINEYARD DESIGNATION \$500 SUBJECT TO APPROVAL FROM GROWER**

**COMMERCIAL EXAMPLE**

Conclusion Wines \$80  
Kagan Cellars \$80  
Oestermann Family Wines \$105  
Krupp Brothers \$150  
Foundry \$115

**AVA**

Napa Valley

**GROWER**

Trini Amador

**SOIL**

Hambright & Guenoc series

**CLONE / ROOTSTOCK**

Clone 337 on 101-14 Rootstock

**TRELLIS / TRAINING**

Bi-Lateral Cordon, VSP (Vertical Shoot Positioning)

## STAGECOACH VINEYARD®

Among the most acclaimed vineyards from which we source, Stagecoach Vineyard® climbs between 900 and 1700 feet up the southern face of Pritchard Hill to Atlas Peak. The site is planted to a wide range of varietals and rootstocks and features several distinct microclimates. We source our Cabernet Sauvignon from a small, steep block near the top of the site. This section is lower-yielding than most of the vineyard. Stagecoach Vineyard® is rich in story, rock and perennial high scoring wines.

Slower ripening is typical in this area, resulting in haunting, dense, black fruit characters supported by sturdy mountain tannins.





**BARREL PRICE**

\$11,200.00 (\$38.89/BOTTLE)

**COMMERCIAL EXAMPLE**

Foundry \$90  
Gray Randolph Wines \$90

**AVA**

Oak Knoll District of Napa Valley,  
Napa Valley

**GROWER / OWNER**

Rick Claes

**SOIL**

Gravelly Clay Loam

**CLONE / ROOTSTOCK**

Clone 7 on 3309 Rootstock

**TRELLIS / TRAINING**

Bi-Lateral Cordon, VSP (Vertical Shoot Positioning)



## TRUBODY LANE VINEYARD

Trubody Lane Vineyard sits adjacent to Trefethen Family in the heart of Oak Knoll District of Napa Valley. Nestled in the southern part of the valley, temperatures in the OKD are moderated by the weather patterns from nearby San Pablo Bay. Cooling breezes and morning fog helps grapes retain assertive acids that warmer growing spots can't match. While the family has not pursued certification, the vines at Trubody Lane Vineyard are farmed organically and planted in porous sands and gravel, which forces the roots to work deep into the ground in search of water. This natural devigoration helps produce smaller berries with balanced concentrations of tannins and acidity. The meticulous sustainable farming techniques and obvious care that have gone into the property's development have us truly excited.

Where some valley floor producers tilt toward one-dimensional "fruit bombs", Trubody Lane Vineyard screams balance through a combination of layered black fruit, berries and spice propped by broad shouldered tannins and refreshing acidity.





### BARREL PRICE

\$8,500.00 (\$29,51/BOTTLE)

### COMMERCIAL EXAMPLE

Kagan Cellars \$45

Landmark \$45

Foundry \$52

Oleandri Wines \$45

WINE ENTHUSIAST 93 POINTS

### AVA

Petaluma Gap, Sonoma County

### GROWER / OWNER

Randy Luginbill

### SOIL

Rhyolitic

### CLONE / ROOTSTOCK

Clones 95 & 76 on  
101-14 Rootstock

### TRELLIS / TRAINING

Bi-Lateral Cordon, VSP (Vertical Shoot Positioning)

## RODGERS CREEK VINEYARD

Rodgers Creek Vineyard is a 297 acre ranch (83.5 acres planted) sitting as a crown jewel on the very eastern edge of the Petaluma Gap. Planted in 2001, the vines have an east-west orientation, allowing the canopy to protect the fruit from steady winds on the hill. Our block of Chardonnay is perched some 600 feet above sea level and farmed so the steep, terraced blocks get plenty of afternoon sun and wind. Constant wind and fog from the east meet temperate weather from the Bay, providing us with later ripening Pinot Noir and Chardonnay. The yields from this mountain site are just around 2.5 tons per acre. Did we mention the view? It's incredible, a clear day reveals 180 degrees views from Napa to San Francisco, Marin and Petaluma.





**BARREL PRICE**

\$6,000.00 (\$20.83/BOTTLE)

**COMMERCIAL EXAMPLE**

Anarchist Wine Co. | **DOUBLE GOLD**

**AVA**

Anderson Valley, Mendocino County

**GROWER / OWNER**

Dennis Hall

**SOIL**

Casabonne, Wohly & Coal Loam

**CLONE / ROOTSTOCK**

Clone 456 on St. George Rootstock

**TRELLIS / TRAINING**

Guyot Simple

## HELLUVA VINEYARD

Anderson Valley’s fog-shrouded landscapes surround inviting hamlets of hippies, hipsters and hobbits noted for growing some of the most flavor-packed cool climate varietals on the globe. Bone chilling mornings give way to brief blasts of ripening afternoon sun, which soon relent behind another wave of fog. This daily tug of war creates the perfect weather partner to unleash exhilarating interpretations of Gewürztraminer with dancing acidity and lush aromas.

Helluva Vineyard delivers a crisp and focused palate revolving around a head-spinning combination of lychee and explosive floral characters of honeysuckle and night blooming jasmine.





**BARREL PRICE**

\$9,200.00 (\$31.94/BOTTLE)

**COMMERCIAL EXAMPLE**

Anarchist Wine Co. Conspiracy Theory | **GOLD**

**AVA**

Russian River Valley, Sonoma County

**GROWER / OWNER**

Renee Brown-Stein

**SOIL**

Dibble Clay Loam

**CLONE / ROOTSTOCK**

Clone TCVA A on 1103P  
Rootstock

**TRELLIS / TRAINING**

Uni-Lateral Cordon, VSP (Vertical Shoot Positioning)

## NOTRE VUE VINEYARD

The certified sustainable 710-acre property is unique in that it spans three famed AVAs in Sonoma County. They are Sonoma Coast, Russian River Valley and Chalk Hill. Here, the vine orientation, combination of alluvial and volcanic soils and unique microclimate, allow the grapes to hang on vine for upwards of 10 extra days. The longer growing season brings additional depth and a slightly more nuanced tannin profile. The wines from this section will be built around a core of bright berries, spice and briar patch.







### BARREL PRICE

\$10,100.00 (\$35.07/BOTTLE)

### COMMERCIAL EXAMPLE

Darjean Jones \$60  
Foundry, The Crucible \$68  
Yao Ming Family Reserve | **ROBERT PARKER 95, WINE ENTHUSIAST 98**

### AVA

Napa Valley

### GROWER / OWNER

Bill Hill

### SOIL

Volcanic & Granite-like sub soil

### CLONE / ROOTSTOCK

Clone 181 on 101-14  
Rootstock

### TRELLIS / TRAINING

Bi-Lateral Cordon, VSP (Vertical Shoot Positioning)

## BROKEN ROCK VINEYARD

One of our favorite places in the Valley, Broken Rock climbs up the base of Atlas Peak, just off Silverado Trail. As with our Cabernet Sauvignon at the property, western exposure on the slope provides plenty of ripening afternoon sun. The elevation and plentiful sunshine combine to deliver a formidable one-two punch of brawny hillside structure and rich valley floor flavor. Elite vineyard designer & operator, Bill Hill, owns Broken Rock. The fields he has developed are consistently found in the WS Top 100.

In the aftermath of a Hollywood film, Merlot was unfairly depicted as being too soft. If only the writer and producers had experienced the Merlot from Broken Rock... In the cellar, we often joke that the most powerful Cabernet in Napa is Merlot from Broken Rock.





<b>BARREL PRICE</b> \$13,500.00 (\$48.88/BOTTLE)  <b>VINEYARD DESIGNATION \$500 SUBJECT TO APPROVAL FROM GROWER</b>	<b>COMMERCIAL EXAMPLE</b> Krupp Brothers \$125 PV 365 Winery \$99	
	<b>AVA</b> Napa Valley	<b>GROWER</b> Trini Amador
	<b>SOIL</b> Hambright and Guenoc series	<b>CLONE / ROOTSTOCK</b> Clone 2 on 110R Rootstock
	<b>TRELLIS / TRAINING</b> Bi-Lateral Cordon, VSP (Vertical Shoot Positioning)	

## STAGECOACH VINEYARD®

In recent years, a fresh breath has begun to re-examine tired assumptions about grape varieties. Once reserved for blending tiny amounts into Cabernet Sauvignon or Merlot, the time for varietally designated bottlings of Petit Verdot has arrived. We're honored to source our 'PV' from Stagecoach Vineyard®, one of the mostly highly-acclaimed properties on the planet. Our block delivers a mouth-filling beast of dense black fruit and haunting ink backed by rip-roaring tannins. Petit is anything but small. This is an epic, head-turning statement worthy of long term aging.





**BARREL PRICE**

\$8,500.00 (\$29.51/BOTTLE)

VINEYARD DESIGNATION \$500 SUBJECT TO APPROVAL FROM GROWER

**COMMERCIAL EXAMPLE**

Hajdu \$50 by allocation only

**AVA**

Mendocino County

**GROWER / OWNER**

Stuart Bewley

**SOIL**

Decomposing Sandstone & Gravelly Loam

**CLONE / ROOTSTOCK**

Clone 01 & 101-14 Rootstock

**TRELLIS / TRAINING**

Bi-Lateral Cordon, VSP (Vertical Shoot Positioning)



## ALDER SPRINGS VINEYARD

Alder Springs Vineyard is widely acknowledged as one of the top properties for New World interpretations of Rhône varietals. We were giddy when offered a tiny block of the exceptionally rare Picpoul Blanc grape. With less than 55 acres planted across California, Picpoul, translated as the “lip stinger”, is noted for purposeful acidity, crisp citrus notes and dramatic minerality.

Wine industry maverick and environmental conservationist, Stu Bewley, did not take the easy route when developing Alder Springs. With the vines steeply terraced into the hillsides at grades of 25%, the terroir is wild, rugged and remotely stationed between the dramatic Mendocino coastline and jaw-dropping strands of 2000 year old redwood trees. Here, vines cling to a series of peaks and valleys between 1700 and 2700 feet in elevation. A push & pull of daytime sun and acid preserving bone chilling nights, make for perfect growing conditions.

The average California grower expects a vine to yield between 10-50 pounds of fruit. Not Alder Springs. Vineyard Manager, José Guillien Cortez, employs the less-is-more bonsai approach with nearly three quarters of the clusters removed over the course of the growing season. These vines yield just 2.5 pounds each. The miniscule output unleashes huge flavors and incredibly dense concentration.





**BARREL PRICE**

\$6,000.00 (\$20.83/BOTTLE)

**COMMERCIAL EXAMPLE**

Anarchist Wine Co. | **DOUBLE GOLD**

**AVA**

Clarksburg

**GROWER / OWNER**

Todd Sanders

**SOIL**

Riverbed

**CLONE / ROOTSTOCK**

Clone 146 on 3309 Rootstock

**TRELLIS / TRAINING**

Bi-Lateral Cordon, VSP (Vertical Shoot Positioning)

## RIVERCAT VINEYARD

The Clarksburg AVA increasingly draws attention for its quality fruit. The moderately long growing season with good airflow from the Sacramento Delta has helped awaken winemakers to the potential of Clarksburg. Rivercat Vineyard is located on the Scribner Bend of the Delta, where the family has farmed for over 100 years. Planted to 15 varietals, Pinot Gris has become a standout. Clone 146, imported from Alsace, tends to produce flinty wines with delicate citrus, lychee and floral aromas.





**BARREL PRICE**

\$9,200.00 (\$31.94/BOTTLE)

**COMMERCIAL EXAMPLE**

Conclusion Wines \$60  
Old Acre Wines \$65  
Tantara \$75 | **WINE ENTHUSIAST 95 POINTS**  
Oleandri Wines \$60 | **WINE ENTHUSIAST 93 POINTS & EDITORS CHOICE**  
Foundry \$64

**AVA**

Sta. Rita Hills, Santa Barbara County

**GROWER / OWNER**

Bill Foley

**SOIL**

Limestone

**CLONE / ROOTSTOCK**

Clones Pommard 4 & 2a

**TRELLIS / TRAINING**

Bi-Lateral Cordon, VSP (Vertical Shoot Positioning)

# LINDSAY’S VINEYARD

The Sta. Rita Hills is one of California’s premier cool-climate AVAs. It is also one of the smaller AVAs with 99% of its territory falling within the larger Santa Ynez Valley AVA. Intersected by the Santa Ynez River, this picturesque region lies between the towns of Buellton and Lompoc in Santa Barbara County. The 205-acre Lindsay’s Vineyard is a rolling site featuring six distinct, limestone-based soil types. As is the norm for Sta. Rita Hills, it is a cool, coastally-influenced site. Lindsay’s is planted to a mix of heritage and heirloom clones carefully matched to the terroir.

Driven by lively red and blue berry fruit, with whispers of briar patch and a touch of wet stone.





### BARREL PRICE

\$9,200.00 (\$31.94/BOTTLE)

### COMMERCIAL EXAMPLE

Cherry Pie \$60

Foundry \$64

Kagan Cellars \$65

Sojourn Cellars \$48 || ROBERT PARKER 93 || WINE ENTHUSIAST 95 POINTS

### AVA

Petaluma Gap, Sonoma County

### GROWER / OWNER

Randy Luginbill

### SOIL

Rhyolitic

### CLONE / ROOTSTOCK

Clone 667 and 777 on 101-14 Rootstock

### TRELLIS / TRAINING

Bi-Lateral Cordon, VSP (Vertical Shoot Positioning)

## RODGERS CREEK VINEYARD

Rodgers Creek Vineyard is a 297 acre ranch (83.5 acres planted) sitting as a crown jewel on the very eastern edge of the Petaluma Gap. Planted in 2001, the vines have an east-west orientation, allowing the canopy to protect the fruit from steady winds on the hill. The site is about 600 feet above sea level and is so uniquely located that the steep, terraced blocks get plenty of afternoon sun and wind. Constant wind and fog from the east meet temperate weather from the Bay, providing us with later ripening Pinot Noir and Chardonnay. The yields from this mountain site are just around 2.5 tons per acre. Did we mention the view? It's incredible, a clear day reveals 180 degrees views from Napa to San Francisco, Marin and Petaluma.





**BARREL PRICE**

\$9,100.00 (\$31.60/BOTTLE)

**COMMERCIAL EXAMPLE**

First Vintage Available for Purchase

**AVA**

Kenwood, Sonoma County

**GROWER / OWNER**

Keith Kunde

**SOIL**

Decomposed Volcanic

**CLONE / ROOTSTOCK**

Piccolo on 420-A Rootstock

**TRELLIS / TRAINING**

Quadri-Lateral VSP (Vertical Shoot Positioning)

## VAN LOBO SEL VINEYARD

Right place. Right time. While walking rows with fourth generation grape grower, Keith Kunde, a discussion led to a remarkable discovery. Keith was bragging about two acres of Sangiovese he was farming in the Kenwood AVA.

The vines are dry-farmed, meaning no irrigation occurs outside of what Mother Nature delivers during our rainy season. Well-executed dry farming practices induce desirable levels of stress, ensuring tiny berries packed with flavor. Bright berry fruit on the nose and palate are supported by light bramble notes and hints of freshly cracked black pepper.





<b>BARREL PRICE</b> \$7,400.00 (\$25.69/BOTTLE)	<b>AVA</b> Alexander Valley, Sonoma County	<b>GROWER / OWNER</b> Micah Wirth
	<b>SOIL</b> Decomposed Red Volcanic, Stonyford & Boomer Loams	<b>CLONE / ROOTSTOCK</b> Clone SB1 & 530 on St. George Rootstock
	<b>TRELLIS / TRAINING</b> Bi-Lateral Cordon, VSP (Vertical Shoot Positioning)	

## NANCE'S VINEYARD

Located in the southeast corner of Alexander Valley, Nance's Vineyard slopes up a sun-splashed hillside on the edges of the Mayacamas Mountain Range. Warm and ripening afternoon temperatures are kept in check by acid preserving morning fog creeping up from the Russian River Valley and Petaluma Gap. The daily seesaw of temperature swings makes for an exceptionally long growing season. While this weather effect on the Zinfandel at the property creates the model for nuance and elegance, those same conditions on the Sauvignon Blanc unleash a wild child. Here, the extra time on vine unshackles explosive aromatics and a chorus line of showy, tropical fruit.







**BARREL PRICE**

\$7,400.00 (\$25.69/BOTTLE)

**COMMERCIAL EXAMPLE**

Sinegal Estate \$50  
Coup de Foudre \$75

**AVA**

Sonoma Valley, Sonoma County

**GROWER / OWNER**

Keith Kunde

**SOIL**

Decomposed Volcanic

**CLONE / ROOTSTOCK**

Clone SB7 & SB22 on  
3309 Rootstock

**TRELLIS / TRAINING**

Quadri-Lateral Cordon, VSP (Vertical Shoot Positioning)

## WILDWOOD VINEYARDS

With a mission of securing exceptional fruit, we keep our eyes trained on outstanding vineyards and our taste buds open to new opportunities. When we heard whispers of hillside Sauvignon Blanc from a storied property with plantings dating back to 1882, we took action.

Wildwood Vineyards climbs between 450 and 2000 feet up the Mayacamas Range above the Sonoma Valley between Glen Ellen and Kenwood. Steeped in tradition and lore, Louis Kunde purchased the vineyard in 1904 and for more than a century, the vines have been tended by five generations of the Kunde family. South facing, the hillside vines cling to volcanic, well-draining, nutrient-depleted soils. The stressful growing conditions result in small yields and wines noted for focused acidity, bright citrus notes and minerality. We're excited and honored to partner with this historic property.



<b>BARREL PRICE</b> \$8,500.00 (\$29.51/BOTTLE)  <b>VINEYARD DESIGNATION \$500 SUBJECT TO APPROVAL FROM GROWER</b>	<b>AVA</b> Mendocino County	<b>GROWER / OWNER</b> Stuart Bewley
	<b>SOIL</b> Decomposing Sandstone & Gravelly Loam	<b>CLONE / ROOTSTOCK</b> Multiple Clones via Massal Selection on So4 Rootstock
	<b>TRELLIS / TRAINING</b> Bi-Lateral Cordon, VSP (Vertical Shoot Positioning)	



## ALDER SPRINGS VINEYARD

Alder Springs Vineyard basks in the glow of accolades, awards and lofty scores from a who's who of cult producers. With the flourishing interest in white Bordeaux grapes, we embraced the opportunity to augment our offerings with Sémillon. In pursuit of complexity, the Alder Springs team eschewed modern reliance on a single clone. Instead, Vineyard Manager, José Guillien Cortez, employed the traditional "massal selection" approach, using cuttings from coveted old vines situated in noted properties and grafting them on healthy rootstocks in the vineyard.

While the famously cool evenings at Alder Springs capture vibrant acidity, the Sémillon delivers ripened and honeyed citrus notes along with mid-palate heft.

Stu Bewley did not take an easy path when creating Alder Springs Vineyard. With 25 different grape varieties steeply terraced into the hillsides at breathless grades of 25%, the terroir is wild, rugged and remotely situated between the dramatic Mendocino coastline and strands of jaw-dropping old growth redwood trees. With a remote and isolated location, Stu tapped into something special. The combination of coastal influence, elevation, well-draining soils, steep slopes, and meticulous farming deliver wines of exceptional complexity and nuance.



**BARREL PRICE**

\$9,100.00 (\$31.60/BOTTLE)

**COMMERCIAL EXAMPLE**Kale Wines \$80 | WINE SPECTATOR 94  
HdV \$85**AVA**

Los Carneros, Napa Valley

**GROWER / OWNER**

Christopher Hyde / Larry Hyde

**SOIL**

Loam &amp; Sandy Clay

**CLONE / ROOTSTOCK**

877 on 3309 Rootstock

**TRELLIS / TRAINING**

Cane Pruned, VSP (Vertical Shoot Positioning)

## HYDE VINEYARD

Larry Hyde founded and planted the 179 acre vineyard in 1979 after his father, Richard Hyde Sr. helped Larry purchase the property. Larry and his family have since cemented their family name and reputation as premier growers of Syrah, Pinot Noir and Chardonnay in the Carneros AVA. A true family business, Larry's sons Peter and Christopher, grew up on the vineyard they now help to farm and manage. The location is key. Here, the soil and climate are expressed in a balanced ripening season, bringing depth and structure to the palate. Hyde Vineyard Syrah wines are built around dark red fruit aromatics and mouth coating fine tannins





**BARREL PRICE**

\$7,100.00 (\$24.65/BOTTLE)

**COMMERCIAL EXAMPLE**

Darjean Jones \$38  
Rubinna Winery \$35  
Whetstone Wine Cellars \$55

**AVA**

Russian River Valley,  
Sonoma County

**GROWER / OWNER**

Richard Kunde

**SOIL**

Huichica Loam Soil

**CLONE / ROOTSTOCK**

Clone 1 on 110R Rootstock

**TRELLIS / TRAINING**

Bi-Lateral Cordon, VSP (Vertical Shoot Positioning)

## CATIE’S CORNER VINEYARD

Catie’s Corner is located in the middle to slightly northern section of the famous Russian River Valley. Our small block of Viognier has a gently rolling profile with predominantly Huichica loam soil. One of the most important qualities about this site for Viognier is the consistent cycle of gentle warming and cooling each day, often the result of foggy mornings and evenings. This helps preserve the balance between attractive natural acidity and the opulent flavors typical of Viognier. This cycle of warming and cooling also leads to a lengthier period of ripening during which flavors and aromas can develop gradually and with greater depth and complexity. The Viognier at Catie’s Corner was budded onto existing rootstock in 1995.

Typical texture and roundness on the palate as you’d expect from a Viognier. Bright, perfumed nose, pronounced citrus and floral characteristics balanced by vibrant acidity.





**BARREL PRICE**

\$9,100.00 (\$31.60/BOTTLE)

**VINEYARD DESIGNATION \$500 SUBJECT TO APPROVAL FROM GROWER**

**COMMERCIAL EXAMPLE**

Bedrock \$80  
Biale \$78  
Carlise \$60  
Louis Martini \$78

**AVA**

Moon Mountain, Sonoma County

**GROWER / OWNER**

Brenae Royal

**SOIL**

Red Hill Loam

**CLONE / ROOTSTOCK**

Monte Rosso Heritage Clone on St. George Rootstock

**TRELLIS / TRAINING**

Bi-Lateral Split Canopy

## MONTE ROSSO VINEYARD

Monte Rosso is often lauded as the single greatest Zinfandel site anywhere, and we proudly continue the tradition for makers and drinkers of this storied varietal.

Planted in 1886, while Grover Cleveland was serving his first term as President, the site is rooted in legacy and lore. Remarkably, a number of the original 140-year-old vines are in great shape and continue to deliver Zinfandel of unprecedented character year after year. The property stairsteps some 1300 feet above sea level on Moon Mountain of the Mayacamas Range, the natural border between Sonoma and Napa.

The red volcanic soils, ground zero for hauntingly complex interpretations, yield layer upon layer of cherry cola, blackberry, and Mandarin orange, underscored by earthy hints of briar patch.





**BARREL PRICE**

\$9,100.00 (\$31.60/BOTTLE)

**COMMERCIAL EXAMPLE**

First Vintage Available for Purchase

**AVA**

Alexander Valley, Sonoma County

**GROWER / OWNER**

Micah Wirth

**SOIL**

Decomposed Red Volcanic,  
Stonyford & Boomer Loams

**CLONE / ROOTSTOCK**

Clone 2 & Primitivo  
on 101-14 Rootstock

**TRELLIS / TRAINING**

Head-Trained and Spur Pruned

## NANCE'S VINEYARD

Located in the southeast corner of Alexander Valley, Nance's Vineyard slopes up a sun-splashed hillside on the edges of the Mayacamas Mountain Range. Warm and ripening afternoon temperatures are kept in check by acid preserving morning fog creeping up from the Russian River Valley and Petaluma Gap. The daily seesaw of temperature swings makes for an exceptionally long growing season. The extra time on vine results in wines of incredible nuance and complexity. Planted in iron-rich, red volcanic soils, Nance's Vineyard delivers layered interpretations of Zinfandel built around bright red-berry, cherry and vibrant minerality.





EACH YEAR, THE WINEMAKERS FLEX FERMENTATION MUSCLES AND FOLLOW THEIR ENOLOGICAL PASSION THROUGH A UNIQUE SERIES WE CALL THE PROJECTS.

**BARREL PRICE**

**\$6,300.00 (\$21.88/BOTTLE)**

**THE PROPRIETARY WHITE PROJECT**

Stick in the mud traditionalists may balk, but Proprietary Blends are of the now; unique viticultural and enological takes that push boundaries while highlighting the strengths of individual components. For the foundation of our Proprietary White, the winemakers ferment Pinot Gris, Sauvignon Blanc & Gewürztraminer completely dry in a combination of stainless steel and concrete. The results have been tremendous. Lean, light and refreshingly crisp.

**BARREL PRICE**

**\$9,500.00 (\$32.99/BOTTLE)**

**THE PROPRIETARY RED PROJECT**

Rules are meant to be broken. Each year, the winemakers pilfer from a special selection of barrels to craft the foundation for our Proprietary Red Blend Project. We cast aside tradition in an attempt to craft the most pleasurable and hedonistic base wine on the planet. With the foundation established, you'll work with the winemakers to shape the aromas, flavors and structure through blending. Remove the shackles of convention and toast to the freedom of flavor.

**BARREL PRICE**

**\$5,600.00 (\$19.44/BOTTLE)**

**THE ROSÉ PROJECT**

The winemakers farm grapes for the traditional Tavelian method of pressing whole clusters to produce Rosé. The results are astounding. By farming Mourvedre and Tempranillo specifically for the Rosé Project, we can dial in the ideal ripeness level at which to pick for bright aromatics and razor sharp acidity. A \$1000 fee is assessed per barrel for custom Rosé blends of less than 4 barrels due to challenges ensuring cold stabilization.





**BARREL PRICE**

**\$11,100.00 (\$38.54/BOTTLE)**

**THE NAPA PROJECT**

Launched in 2014, the Napa Project was first conceptualized as a way for the winemakers to flex fermentation muscles and follow enological passion. The project is built around a foundation of Cabernet Sauvignon assembled from a selection of vineyards perched at various elevations across Napa Valley. As when crafting vineyard designated bottlings, you'll work with our winemakers to adjust structure, aromatics and flavor to your specific taste during your blending trials.

**BARREL PRICE**

**\$9,500.00 (\$32.99/BOTTLE)**

**THE RHÔNE PROJECT**

Welcome to Rhôneformia. Wine geeks from across the globe gravitate toward the layered nuance and sophistication of the red grapes associated with France's Rhône region. Since quietly introducing the project in 2017, the winemakers have repeatedly delivered powerhouse cores built around Syrah, Grenache and Mourvedre. With the bedrock of GSM in place, you'll collaborate with the winemaking team to take the foundation to new heights through blending.

**BARREL PRICE**

**\$9,500.00 (\$32.99/BOTTLE)**

**THE SUPER TUSCAN PROJECT**

Inspired by the complexity and depth of Super Tuscans, the winemakers began introducing Bordeaux varietals into Sangiovese with stunning results. The Sangiovese delivers bright berry, hints of briar patch and lively acidity while the Bordeaux varietals bring haunting depth to the palate and structure – a formidable one-two combination. Clients build upon the foundation by having access to Cabernet Sauvignon and other varietals when blending.

**CASE PRICE**

**PRICING VARIES ACCORDING TO THE SPECIFIC PROJECT.**

**THE CUSTOM LABEL PROJECT**

Each year, our winemaking team crafts ultra-premium bottlings specifically for custom labeling. You can choose to order from an upcoming vintage to reserve your allocation or select finished wines from previous vintages as the quickest pathway to having bottles in hand. A fan favorite of companies, clubs, and organizations from Silicon Valley to Hong Kong, our Custom Label Project helps tell your story with ultra-premium wine.







## DESIGN & PACKAGING

Just as creating wine becomes a personal journey, your unique life-stories and events often become the foundation for branding and label design. When naming your wine, some questions to ask are:

- What led you to make wine?
- Is your wine dedicated to someone special and what is the relationship?
- Is there a special place that you would like to honor?
- What is your unique story and what makes that story uniquely you?

We feature several bottle shapes, sizes and weights from which to choose, along with the ability to create customized treatments such as branded corks and custom labels for an additional fee.

5 hours of design time for a standard label and standard packaging is included with the purchase of your first barrel.





# PAYMENT OPTIONS & DISCOUNTS

Barrel prices include winemaker consultation, our state of the art winemaking process, blending session with one of our award-winning winemakers, bottling, and as much of your participation in the wine production process as you would like.

The label design fee is an additional charge, but the standard design package fee is waived with the purchase of your first barrel (maximum 5 hours).

Non-standard winemaking processes and premium packaging, labels and design (i.e. foil, silk-screening, hand drawn images, custom corks, non-standard bottles) are available, and additional fees will apply.

## TWF WINEMAKING

Payment is due in full within 10 days of contract signing to secure fruit source (after 10 days, allocation cannot be guaranteed) or choose our installment payment option.

## FOUR INSTALLMENTS

30% due within 10 days of contract signing (after 10 days, allocation cannot be guaranteed)  
30% due September 1, 2022  
30% due February 1, 2023  
10% due 30 days prior to bottling date

## VOLUME DISCOUNTS

5% discount for 2-3 barrels  
10% discount for 4-7 barrels  
15% discount for 8-11 barrels  
20% discount for 12+ barrels

## WINEFOUNDRYGUILD®

## VOLUME DISCOUNTS

10% discount for 2-3 barrels  
15% discount for 4-7 barrels  
20% discount for 8+ barrels

Please contact [makewine@thewinefoundry.com](mailto:makewine@thewinefoundry.com) or call 707.637.8821 x7302.

